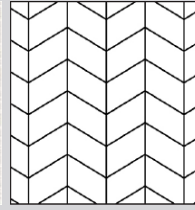




# CHEVRON 60° | TECHNICAL INFORMATION

Product # 1183-4878-20

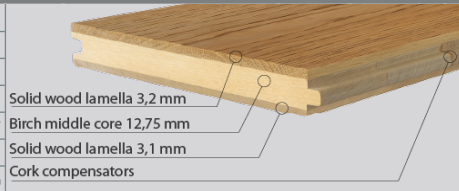


## WHITE BREATHE COLLECTION DECOR | ALPINE

**Wood species** | Oak  
**Selection** | Tavern  
**Pattern** | Chevron  
**Constructions** | 3-layer flooring T&G  
**Size** | 19,05x190x438.78 mm (3/4"x7 1/2"x17 1/4")  
**Finish** | Silk mat finish

### CONSTRUCTION: 3-LAYER FLOORING T&G

DIMENSIONS :	
Thickness	19,05 mm (3/4")
Width	190 mm (7 1/2")
Length	438.78 mm (17 1/4")
Cut angle	60°
Microbevel	0,5 mm
Joint type	T&G



PACKAGING :	BOX	PALLET
	Content	1,667 m2
Weigh	21 kg	645 kg
H x W x L	195 x 395 x 560 mm	1121 x 800 x 1 750 mm
Content	17,937 sq.ft.	538,108 sq.ft.
Weigh	21 lb	669 lb
H x W x L	8" x 16" x 22" mm	45" x 32" x 69" mm

### DEVIATIONS:

Deviation on Thickness	± 0,2 mm	EN 13489 ГОСТ 862.3
Deviation on Length	± 0,3 mm	
Deviation on Width	± 0,2 mm	
Angle deviation of planks	≤ 0,25 mm	
Cup	≤ 0,2 % of width	EN 13489
Bow	≤ 0,5 % of length	
Spring	≤ 0,1 % of length	

### CHARACTERISTICS:

Fire resistance	Dfl-s1	EN 14342
Formaldehyde emission class	E1	
Pentachlorophenol content	None	
Thermal resistance	0,082 m2·K/W	
Thermal conductivity	0,161 W/(m·K)	
Structural warranty	Lifetime	

### УСТАНОВКА:



Glue down over concrete, plywood or wooden subfloor or nail down over wooden subfloor. Applicable above, on and below ground level. Suitable for installation over radiant heating systems.

### УСЛОВИЯ ЭКСПЛУАТАЦИИ И ХРАНЕНИЯ:



— Air humidity 40% – 65%  
— Temperature +18 °C – +22 °C

### FINISH : SILK MAT FINISH

### GRADE : TAVERN

DESCRIPTION:		DESCRIPTION:	
Sound sapwood	Up to 25% of board width is allowed	Bark pocket	No limit (after filling)
Colour variation	Moderate contrast allowed	Pith	Permitted
Knot	Permitted big, filled	Slope of grain	Permitted
Crecks	Permitted wide, filled	Medullary ray	Permitted

### COSWICK Ltd.

2B Kolasa Str., 223034 Zaslavl, Republic of Belarus  
Tel.: +375-17-543-2012, Fax: +375-17-543-2020, E-mail: sales@coswick.com  
www.coswick.com

