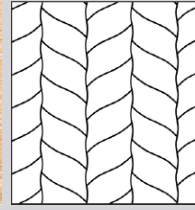




# MOSAIC WOOD FLOORS FLOORS | TECHNICAL INFORMATION

Product # 1186-1827-10



## WHITE BREATHE COLLECTION DECOR | BARCELONA

**Wood species** | Oak  
**Selection** | Select & Better  
**Pattern** | Tealeaf  
**Constructions** | 3-layer flooring T&G  
**Size** | 19,05x190x350 mm (3/4"x7 1/2"x13 3/4")  
**Finish** | Silk mat finish

### CONSTRUCTION: 3-LAYER FLOORING T&G

| DIMENSIONS :   |                 |  | PACKAGING : |                    |
|----------------|-----------------|--|-------------|--------------------|
|                |                 |  | BOX         | PALLET             |
| Thickness      | 19,05 mm (3/4") |  | Content     | 1,2 m2             |
| Width          | 190 mm (7 1/2") |  | Weigh       | 15 kg              |
| Length         | 350 (13 3/4")   |  | H x W x L   | 195 x 405 x 470 mm |
| Average length |                 |  | Content     | 12,912 sq.ft.      |
| Microbevel     | 0,5 mm          |  | Weigh       | 16 lb              |
| Joint type     | T&G             |  | H x W x L   | 8" x 16" x 22" mm  |
|                |                 |  |             | 44" x 32" x 74" mm |
|                |                 |  |             |                    |

### DEVIATIONS:

|                           |                   |                        |
|---------------------------|-------------------|------------------------|
| Deviation on Thickness    | ± 0,2 mm          | EN 13489<br>FOCT 862.3 |
| Deviation on Length       | ± 0,3 mm          |                        |
| Deviation on Width        | ± 0,2 mm          |                        |
| Angle deviation of planks | ≤ 0,25 mm         |                        |
| Cup                       | ≤ 0,2 % of width  | EN 13489               |
| Bow                       | ≤ 0,5 % of length |                        |
| Spring                    | ≤ 0,1 % of length |                        |

### CHARACTERISTICS:

|                             |               |          |
|-----------------------------|---------------|----------|
| Fire resistance             | Dfl-s1        | EN 14342 |
| Formaldehyde emission class | E1            |          |
| Pentachlorophenol content   | None          |          |
| Thermal resistance          | 0,082 m2·K/W  |          |
| Thermal conductivity        | 0,161 W/(m·K) |          |
| Structural warranty         | Lifetime      |          |

### INSTALLATION :



Glue down over concrete, plywood or wooden subfloor or nail down over wooden subfloor. Applicable above, on and below ground level. Suitable for installation over radiant heating systems.

### STORAGE AND USAGE :



— Air humidity 40% – 65%  
 — Temperature +18 °C – +22 °C

### FINISH : SILK MAT FINISH

| DESCRIPTION :         |   |
|-----------------------|---|
| Type of coating       | UV-cured modified polyurethane-acrylate |
| Surface (finish) type | Semi-closed pores, wire brushed         |
| Sheen                 | Matte, 2-5 GU/60°                       |
| Finish warranty       | -                                       |

### CLASSIFICATION SURFACE CHARACTERISTICS:

|                               |                           |          |
|-------------------------------|---------------------------|----------|
| Wear resistance               | Not rated                 | EN 438-2 |
| Scratch resistance            | Not rated                 | EN 438   |
| Slip resistance               | 50 (SRV dry)              | EN 15676 |
| Resistance to chemical agents | Class 5 (Except blue ink) | EN 13442 |
| Repairability                 | Medium                    |          |

### MAINTENANCE AND CARE CONDITIONS :

Maintenance of hardwood floors with Silk finish assumes regular (daily if necessary) cleaning from dust and grit using a vacuum, followed by a thorough cleaning with Coswick Hardwood Floor Cleaner or other similar product. Floor surface areas that receive the most traffic and get worn down quicker, such as areas by the front door, hallways, kitchens etc., should be periodically renewed with special Coswick Restorative Oil. This product restores the protective surface film. Frequency of use depends on type of interior and intensity of foot traffic. For residential interiors, restorative cleaning should be done once in 3-5 years; for public and commercial interiors with intense foot traffic, it is recommended to use the product 2-4 times a year.

### SELECTION : SELECT & BETTER

| DESCRIPTION:     |  | DESCRIPTION:   |  |
|------------------|--|----------------|--|
| Sound sapwood    | Non-contrasting sapwood is allowed up to 25% of plank area | Bark pocket    | Permitted up to 10 mm in length, up to 3 mm in width, filled |
| Colour variation | Permitted slight colour variation                          | Pith           | Permitted healthy heart                                      |
| Knot             | Permitted up to 10 mm, filled                              | Slope of grain | Permitted  |
| Crecks           | Not permitted  | Medullary ray  | Permitted  |

### COSWICK Ltd.

2B Kolasa Str., 223034 Zaslavl, Republic of Belarus  
 Tel.: +375-17-543-2012, Fax: +375-17-543-2020, E-mail: sales@coswick.com  
 www.coswick.com

