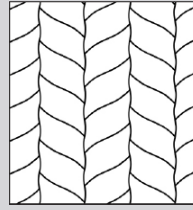




# MOSAIC WOOD FLOORS FLOORS | TECHNICAL INFORMATION

Product # 1198-1814-10



## NATURAL TOUCH COLLECTION DECOR | BARN

**Wood species** | Oak  
**Selection** | Select & Better  
**Pattern** | Tealeaf  
**Constructions** | 3-layer flooring T&G  
**Size** | 15x190x350 mm (5/8"x7 1/2"x13 3/4")  
**Finish** | Silk mat finish

### CONSTRUCTION: 3-LAYER FLOORING T&G

| DIMENSIONS :   |                 |           | PACKAGING :       |                    |                       |
|----------------|-----------------|-----------|-------------------|--------------------|-----------------------|
|                |                 |           | BOX               | PALLET             |                       |
| Thickness      | 15 mm (5/8")    |           | Content           | 1,56 m2            | 40 box (62,4 m2)      |
| Width          | 190 mm (7 1/2") |           | Weigh             | 16 kg              | 664 kg                |
| Length         | 350 (13 3/4")   |           | H x W x L         | 195 x 405 x 470 mm | 1113 x 800 x 1 880 mm |
| Average length |                 | Content   | 16,786 sq.ft.     | 671,424 sq.ft.     |                       |
| Microbevel     | 0,5 mm          | Weigh     | 17 lb             | 688 lb             |                       |
| Joint type     | T&G             | H x W x L | 8" x 16" x 22" mm | 44" x 32" x 74" mm |                       |

### DEVIATIONS:

|                           |                   |                        |
|---------------------------|-------------------|------------------------|
| Deviation on Thickness    | ± 0,2 mm          | EN 13489<br>ГОСТ 862.3 |
| Deviation on Length       | ± 0,3 mm          |                        |
| Deviation on Width        | ± 0,2 mm          |                        |
| Angle deviation of planks | ≤ 0,25 mm         |                        |
| Cup                       | ≤ 0,2 % of width  | EN 13489               |
| Bow                       | ≤ 0,5 % of length |                        |
| Spring                    | ≤ 0,1 % of length |                        |

### CHARACTERISTICS:

|                             |               |          |
|-----------------------------|---------------|----------|
| Fire resistance             | Dfl-s1        | EN 14342 |
| Formaldehyde emission class | E1            |          |
| Pentachlorophenol content   | None          |          |
| Thermal resistance          | 0,095 m2 K/W  |          |
| Thermal conductivity        | 0,158 W/(m·K) |          |
| Structural warranty         | Lifetime      |          |

### УСТАНОВКА:



Glue down over concrete, plywood or wooden subfloor or nail down over wooden subfloor. Applicable above, on and below ground level. Suitable for installation over radiant heating systems.

### УСЛОВИЯ ЭКСПЛУАТАЦИИ И ХРАНЕНИЯ:



— Air humidity 40% – 65%  
 — Temperature +18 °C – +22 °C

### FINISH : SILK MAT FINISH

### GRADE : SELECT & BETTER

| DESCRIPTION:     |  | DESCRIPTION:   |  |
|------------------|--|----------------|--|
| Sound sapwood    | Non-contrasting sapwood is allowed up to 25% of plank area | Bark pocket    | Permitted up to 10 mm in length, up to 3 mm in width, filled |
| Colour variation | Permitted slight colour variation                          | Pith           | Permitted healthy heart                                      |
| Knot             | Permitted up to 10 mm, filled                              | Slope of grain | Permitted  |
| Crecks           | Not permitted  | Medullary ray  | Permitted  |

### COSWICK Ltd.

2B Kolasa Str., 223034 Zaslavl, Republic of Belarus  
 Tel.: +375-17-543-2012, Fax: +375-17-543-2020, E-mail: sales@coswick.com  
 www.coswick.com

