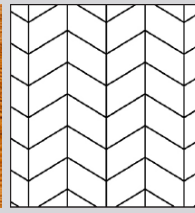




CHEVRON 60° | TECHNICAL INFORMATION

Product # 1192-4820-30



NATURAL TOUCH COLLECTION DECOR | GENEVA

Wood species | Oak
Selection | Tavern
Pattern | Chevron
Constructions | 3-layer flooring T&G
Size | 15x190x438.78 mm (5/8"x7 1/2"x17 1/4")
Finish | Silk mat finish

CONSTRUCTION: 3-LAYER FLOORING T&G

DIMENSIONS :			PACKAGING :	
			BOX	PALLET
Thickness	15 mm (5/8")		Content	2,168 m2
Width	190 mm (7 1/2")		Weigh	22 kg
Length	438.78 mm (17 1/4")		H x W x L	195 x 395 x 560 mm
Cut angle	60°		Content	23,328 sq.ft.
Microbevel	0,5 mm		Weigh	23 lb
Joint type	T&G		H x W x L	8" x 16" x 22" mm
				30 box (65,04 m2)
				685 kg
			1121 x 800 x 1 750 mm	
			699,830 sq.ft.	
			710 lb	
			45" x 32" x 69" mm	

DEVIATIONS:

Deviation on Thickness	± 0,2 mm	EN 13489 ГОСТ 862.3
Deviation on Length	± 0,3 mm	
Deviation on Width	± 0,2 mm	
Angle deviation of planks	≤ 0,25 mm	
Cup	≤ 0,2 % of width	EN 13489
Bow	≤ 0,5 % of length	
Spring	≤ 0,1 % of length	

CHARACTERISTICS:

Fire resistance	Dfl-s1	EN 14342
Formaldehyde emission class	E1	
Pentachlorophenol content	None	
Thermal resistance	0,095 m2 K/W	
Thermal conductivity	0,158 W/(m·K)	
Structural warranty	Lifetime	

УСТАНОВКА:



Glue down over concrete, plywood or wooden subfloor or nail down over wooden subfloor. Applicable above, on and below ground level. Suitable for installation over radiant heating systems.

УСЛОВИЯ ЭКСПЛУАТАЦИИ И ХРАНЕНИЯ:



— Air humidity 40% – 65%
 — Temperature +18 °C – +22 °C

FINISH : SILK MAT FINISH

GRADE : TAVERN

DESCRIPTION:		DESCRIPTION:	
Sound sapwood	Up to 25% of board width is allowed	Bark pocket	No limit (after filling)
Colour variation	Moderate contrast allowed	Pith	Permitted
Knot	Permitted big, filled	Slope of grain	Permitted
Crecks	Permitted wide, filled	Medullary ray	Permitted

COSWICK Ltd.

2B Kolasa Str., 223034 Zaslavl, Republic of Belarus
 Tel.: +375-17-543-2012, Fax: +375-17-543-2020, E-mail: sales@coswick.com
 www.coswick.com

