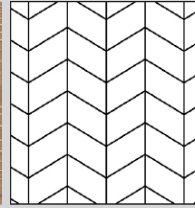




# CHEVRON 60° | TECHNICAL INFORMATION

Product # 1192-4833-20



## GREY SHADOW COLLECTION DECOR | GREY WOOD

**Wood species** | Oak  
**Selection** | Tavern  
**Pattern** | Chevron  
**Constructions** | 3-layer flooring T&G  
**Size** | 15x190x438.78 mm (5/8"x7 1/2"x17 1/4")  
**Finish** | Silk mat finish

### CONSTRUCTION: 3-LAYER FLOORING T&G

DIMENSIONS :			PACKAGING :	
			BOX	PALLET
Thickness	15 mm (5/8")	Content	2,168 m2	30 box (65,04 m2)
Width	190 mm (7 1/2")	Weigh	22 kg	685 kg
Length	438.78 mm (17 1/4")	H x W x L	195 x 395 x 560 mm	1121 x 800 x 1 750 mm
Cut angle	60°	Content	23,328 sq.ft.	699,830 sq.ft.
Microbevel	0,5 mm	Weigh	23 lb	710 lb
Joint type	T&G	H x W x L	8" x 16" x 22" mm	45" x 32" x 69" mm

DEVIATIONS:		
Deviation on Thickness	± 0,2 mm	EN 13489 ГОСТ 862.3
Deviation on Length	± 0,3 mm	
Deviation on Width	± 0,2 mm	
Angle deviation of planks	≤ 0,25 mm	
Cup	≤ 0,2 % of width	EN 13489
Bow	≤ 0,5 % of length	
Spring	≤ 0,1 % of length	

CHARACTERISTICS:		
Fire resistance	Dfl-s1	EN 14342
Formaldehyde emission class	E1	
Pentachlorophenol content	None	
Thermal resistance	0,095 m2 K/W	
Thermal conductivity	0,158 W/(m·K)	
Structural warranty	Lifetime	

УСТАНОВКА:	УСЛОВИЯ ЭКСПЛУАТАЦИИ И ХРАНЕНИЯ:
<p>Glue down over concrete, plywood or wooden subfloor or nail down over wooden subfloor. Applicable above, on and below ground level. Suitable for installation over radiant heating systems.</p>	<p>— Air humidity 40% – 65% — Temperature +18 °C – +22 °C</p>

**FINISH : SILK MAT FINISH**

**GRADE : TAVERN**

DESCRIPTION:		DESCRIPTION:	
Sound sapwood	Up to 25% of board width is allowed	Bark pocket	No limit (after filling)
Colour variation	Moderate contrast allowed	Pith	Permitted
Knot	Permitted big, filled	Slope of grain	Permitted
Crecks	Permitted wide, filled	Medullary ray	Permitted

**COSWICK Ltd.**  
2B Kolasa Str., 223034 Zaslavl, Republic of Belarus  
Tel.: +375-17-543-2012, Fax: +375-17-543-2020, E-mail: sales@coswick.com  
[www.coswick.com](http://www.coswick.com)

