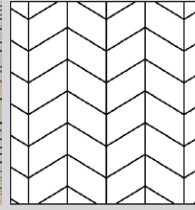




CHEVRON 60° | TECHNICAL INFORMATION

Product # 1183-3856-30



DESIGNER SOLUTION COLLECTION DECOR | INDIGO

Wood species | Oak
Selection | 1 Common
Pattern | Chevron
Constructions | 3-layer flooring T&G
Size | 19,05x190x438.78 mm (3/4"x7 1/2"x17 1/4")
Finish | Silk mat finish

CONSTRUCTION: 3-LAYER FLOORING T&G

DIMENSIONS :			PACKAGING :	
			BOX	PALLET
Thickness	19,05 mm (3/4")	Content	1,667 m2	30 box (50,01 m2)
Width	190 mm (7 1/2")	Weigh	21 kg	645 kg
Length	438.78 mm (17 1/4")	H x W x L	195 x 395 x 560 mm	1121 x 800 x 1 750 mm
Cut angle	60°	Content	17,937 sq.ft.	538,108 sq.ft.
Microbevel	0,5 mm	Weigh	21 lb	669 lb
Joint type	T&G	H x W x L	8" x 16" x 22" mm	45" x 32" x 69" mm

DEVIATIONS:

Deviation on Thickness	± 0,2 mm	EN 13489 ГОСТ 862.3
Deviation on Length	± 0,3 mm	
Deviation on Width	± 0,2 mm	
Angle deviation of planks	≤ 0,25 mm	
Cup	≤ 0,2 % of width	EN 13489
Bow	≤ 0,5 % of length	
Spring	≤ 0,1 % of length	

CHARACTERISTICS:

Fire resistance	Dfl-s1	EN 14342
Formaldehyde emission class	E1	
Pentachlorophenol content	None	
Thermal resistance	0,082 m2·K/W	
Thermal conductivity	0,161 W/(m·K)	
Structural warranty	Lifetime	

УСТАНОВКА:



Glue down over concrete, plywood or wooden subfloor or nail down over wooden subfloor. Applicable above, on and below ground level. Suitable for installation over radiant heating systems.

УСЛОВИЯ ЭКСПЛУАТАЦИИ И ХРАНЕНИЯ:



— Air humidity 40% – 65%
 — Temperature +18 °C – +22 °C

FINISH : SILK MAT FINISH

GRADE : 1 COMMON

DESCRIPTION:		DESCRIPTION:	
Sound sapwood	Non-contrasting sapwood is allowed up to 25% of board width	Bark pocket	Permitted up to 50 mm in length, up to 5 mm in width, filled
Colour variation	Moderate contrast allowed	Pith	Permitted
Knot	Permitted up to 25 mm, filled	Slope of grain	Permitted
Crecks	Permitted narrow, filled	Medullary ray	Permitted

COSWICK Ltd.

2B Kolasa Str., 223034 Zaslavl, Republic of Belarus
 Tel.: +375-17-543-2012, Fax: +375-17-543-2020, E-mail: sales@coswick.com
 www.coswick.com

