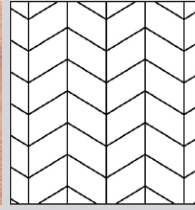




# CHEVRON 60° | TECHNICAL INFORMATION

Product # 1192-1809-10



## NATURAL TOUCH COLLECTION DECOR | RAW SIENNA

**Wood species** | Oak  
**Selection** | Select & Better  
**Pattern** | Chevron  
**Constructions** | 3-layer flooring T&G  
**Size** | 15x190x438.78 mm (5/8"x7 1/2"x17 1/4")  
**Finish** | Silk mat finish

### CONSTRUCTION: 3-LAYER FLOORING T&G

| DIMENSIONS : |                     |           | PACKAGING :        |                       |
|--------------|---------------------|-----------|--------------------|-----------------------|
|              |                     |           | BOX                | PALLET                |
| Thickness    | 15 mm (5/8")        | Content   | 2,168 m2           | 30 box (65,04 m2)     |
| Width        | 190 mm (7 1/2")     | Weigh     | 22 kg              | 685 kg                |
| Length       | 438.78 mm (17 1/4") | H x W x L | 195 x 395 x 560 mm | 1121 x 800 x 1 750 mm |
| Cut angle    | 60°                 | Content   | 23,328 sq.ft.      | 699,830 sq.ft.        |
| Microbevel   | 0,5 mm              | Weigh     | 23 lb              | 710 lb                |
| Joint type   | T&G                 | H x W x L | 8" x 16" x 22" mm  | 45" x 32" x 69" mm    |

### DEVIATIONS:

|                           |                   |                        |
|---------------------------|-------------------|------------------------|
| Deviation on Thickness    | ± 0,2 mm          | EN 13489<br>ГОСТ 862.3 |
| Deviation on Length       | ± 0,3 mm          |                        |
| Deviation on Width        | ± 0,2 mm          |                        |
| Angle deviation of planks | ≤ 0,25 mm         |                        |
| Cup                       | ≤ 0,2 % of width  | EN 13489               |
| Bow                       | ≤ 0,5 % of length |                        |
| Spring                    | ≤ 0,1 % of length |                        |

### CHARACTERISTICS:

|                             |               |          |
|-----------------------------|---------------|----------|
| Fire resistance             | Dfl-s1        | EN 14342 |
| Formaldehyde emission class | E1            |          |
| Pentachlorophenol content   | None          |          |
| Thermal resistance          | 0,095 m2 K/W  |          |
| Thermal conductivity        | 0,158 W/(m·K) |          |
| Structural warranty         | Lifetime      |          |

### УСТАНОВКА:



Glue down over concrete, plywood or wooden subfloor or nail down over wooden subfloor. Applicable above, on and below ground level. Suitable for installation over radiant heating systems.

### УСЛОВИЯ ЭКСПЛУАТАЦИИ И ХРАНЕНИЯ:



— Air humidity 40% – 65%  
— Temperature +18 °C – +22 °C

### FINISH : SILK MAT FINISH

### GRADE : SELECT & BETTER

| DESCRIPTION:     |  | DESCRIPTION:   |  |
|------------------|--|----------------|--|
| Sound sapwood    | Non-contrasting sapwood is allowed up to 25% of plank area | Bark pocket    | Permitted up to 10 mm in length, up to 3 mm in width, filled |
| Colour variation | Permitted slight colour variation                          | Pith           | Permitted healthy heart                                      |
| Knot             | Permitted up to 10 mm, filled                              | Slope of grain | Permitted  |
| Crecks           | Not permitted  | Medullary ray  | Permitted  |

### COSWICK Ltd.

2B Kolasa Str., 223034 Zaslavl, Republic of Belarus  
Tel.: +375-17-543-2012, Fax: +375-17-543-2020, E-mail: sales@coswick.com  
www.coswick.com

