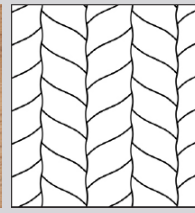




MOSAIC WOOD FLOORS FLOORS | TECHNICAL INFORMATION

Product # 1186-1823-10

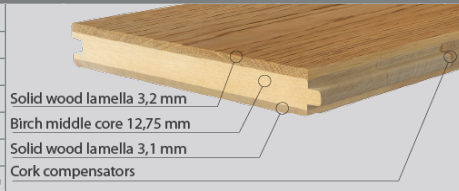


DESIGNER SOLUTION COLLECTION DECOR | SANDY

Wood species | Oak
Selection | Select & Better
Pattern | Tealeaf
Constructions | 3-layer flooring T&G
Size | 19,05x190x350 mm (3/4"x7 1/2"x13 3/4")
Finish | Silk mat finish

CONSTRUCTION: 3-LAYER FLOORING T&G

DIMENSIONS :	
Thickness	19,05 mm (3/4")
Width	190 mm (7 1/2")
Length	350 (13 3/4")
Average length	
Microbevel	0,5 mm
Joint type	T&G



PACKAGING :	BOX	PALLET
	Content	1,2 m2
Weigh	15 kg	626 kg
H x W x L	195 x 405 x 470 mm	1113 x 800 x 1 880 mm
Content	12,912 sq.ft.	516,480 sq.ft.
Weigh	16 lb	650 lb
H x W x L	8" x 16" x 22" mm	44" x 32" x 74" mm

DEVIATIONS:

Deviation on Thickness	± 0,2 mm	EN 13489 ГОСТ 862.3
Deviation on Length	± 0,3 mm	
Deviation on Width	± 0,2 mm	
Angle deviation of planks	≤ 0,25 mm	
Cup	≤ 0,2 % of width	EN 13489
Bow	≤ 0,5 % of length	
Spring	≤ 0,1 % of length	

CHARACTERISTICS:

Fire resistance	Dfl-s1	EN 14342
Formaldehyde emission class	E1	
Pentachlorophenol content	None	
Thermal resistance	0,082 m2·K/W	
Thermal conductivity	0,161 W/(m·K)	
Structural warranty	Lifetime	

УСТАНОВКА:



Glue down over concrete, plywood or wooden subfloor or nail down over wooden subfloor. Applicable above, on and below ground level. Suitable for installation over radiant heating systems.

УСЛОВИЯ ЭКСПЛУАТАЦИИ И ХРАНЕНИЯ:



— Air humidity 40% – 65%
 — Temperature +18 °C – +22 °C

FINISH : SILK MAT FINISH

GRADE : SELECT & BETTER

DESCRIPTION:		DESCRIPTION:	
Sound sapwood	Non-contrasting sapwood is allowed up to 25% of plank area	Bark pocket	Permitted up to 10 mm in length, up to 3 mm in width, filled
Colour variation	Permitted slight colour variation	Pith	Permitted healthy heart
Knot	Permitted up to 10 mm, filled	Slope of grain	Permitted
Crecks	Not permitted	Medullary ray	Permitted

COSWICK Ltd.

2B Kolasa Str., 223034 Zaslavl, Republic of Belarus
 Tel.: +375-17-543-2012, Fax: +375-17-543-2020, E-mail: sales@coswick.com
 www.coswick.com

