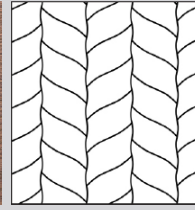
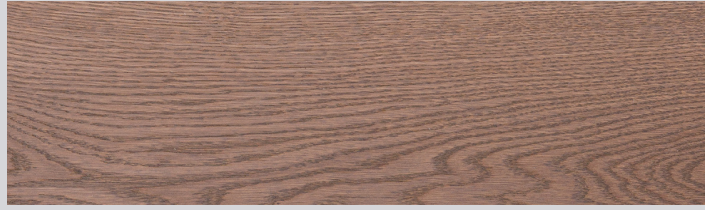




MOSAIC WOOD FLOORS FLOORS I TECHNICAL INFORMATION

Product # 1186-1867-10



GREY SHADOW COLLECTION DECOR | SPINEL GREY

Wood species | Oak
Selection | Select & Better
Pattern | Tealeaf
Constructions | 3-layer flooring T&G
Size | 19,05x190x350 mm (3/4"x7 1/2"x13 3/4")
Finish | Silk mat finish

CONSTRUCTION: 3-LAYER FLOORING T&G

| DIMENSIONS : | | | PACKAGING : | | |
|----------------|-----------------|--|-------------|--------------------|-----------------------|
| | | | BOX | PALLET | |
| Thickness | 19,05 mm (3/4") | | Content | 1,2 m2 | 40 box (48 m2) |
| Width | 190 mm (7 1/2") | | Weigh | 15 kg | 626 kg |
| Length | 350 (13 3/4") | | H x W x L | 195 x 405 x 470 mm | 1113 x 800 x 1 880 mm |
| Average length | | | Content | 12,912 sq.ft. | 516,480 sq.ft. |
| Microbevel | 0,5 mm | | Weigh | 16 lb | 650 lb |
| Joint type | T&G | | H x W x L | 8" x 16" x 22" mm | 44" x 32" x 74" mm |

DEVIATIONS:

| | | |
|---------------------------|-------------------|------------------------|
| Deviation on Thickness | ± 0,2 mm | EN 13489 ГОСТ 862.3 |
| Deviation on Length | ± 0,3 mm | |
| Deviation on Width | ± 0,2 mm | |
| Angle deviation of planks | ≤ 0,25 mm | |
| Cup | ≤ 0,2 % of width | EN 13489 |
| Bow | ≤ 0,5 % of length | |
| Spring | ≤ 0,1 % of length | |

CHARACTERISTICS:

| | | |
|-----------------------------|---------------|----------|
| Fire resistance | Dfl-s1 | EN 14342 |
| Formaldehyde emission class | E1 | |
| Pentachlorophenol content | None | |
| Thermal resistance | 0,082 m2·K/W | |
| Thermal conductivity | 0,161 W/(m·K) | |
| Structural warranty | Lifetime | |

УСТАНОВКА:



Glue down over concrete, plywood or wooden subfloor or nail down over wooden subfloor. Applicable above, on and below ground level. Suitable for installation over radiant heating systems.

УСЛОВИЯ ЭКСПЛУАТАЦИИ И ХРАНЕНИЯ:



— Air humidity 40% – 65%
 — Temperature +18 °C – +22 °C

FINISH : SILK MAT FINISH

GRADE : SELECT & BETTER

| DESCRIPTION: | | DESCRIPTION: | |
|------------------|--|----------------|--|
| Sound sapwood | Non-contrasting sapwood is allowed up to 25% of plank area | Bark pocket | Permitted up to 10 mm in length, up to 3 mm in width, filled |
| Colour variation | Permitted slight colour variation | Pith | Permitted healthy heart |
| Knot | Permitted up to 10 mm, filled | Slope of grain | Permitted |
| Crecks | Not permitted | Medullary ray | Permitted |

COSWICK Ltd.

2B Kolasa Str., 223034 Zaslavl, Republic of Belarus
 Tel.: +375-17-543-2012, Fax: +375-17-543-2020, E-mail: sales@coswick.com
 www.coswick.com

